



Youth Sport Tournament Reopening Guidelines

Effective June 12, 2020

The City of Bridgeport Parks and Recreation Department has developed these guidelines in conjunction with the *Safety Guidance for Low-Contact Sport* document released by the Governor of West Virginia's Office on June 3, 2020. This is part of the West Virginia Strong, The Comeback plan.

The City, working with our various user groups have developed these procedures to allow participation in youth sports at City venues while maintaining the safety of participants and spectators. These guidelines will be modified as needed to address any issues that arise or further guidance from the CDC, the State of West Virginia, or the Harrison County Health Department.

These are being released in accordance of Governor Justice's Executive Orders effective for low-contact sports practices as of **June 8, 2020** and for low-contact youth games and other competitions with limited spectators as of **June 22, 2020** that allow for the return to competition.

Please Note: Failure to comply with these regulations can result in the closure of the facility by the City of Bridgeport or the Harrison County Health Department. We are relying on the common sense and courtesy of all participants, coaches, and spectators to act in manner that serves to protect everyone utilizing the facility while following these guidelines.

Social Distancing Plan:

To adhere to the strict guidance of maintaining social distancing of 6' between people not residing in the same household, the following procedures will be implemented:

Recreation Complex:

- All gates will remain closed except the main gate on the northern side of the complex.
- Only League officials, Coaches, Umpires, and players will be permitted within the complex proper.
- All spectators will be required to stay on the perimeter of the outfield fencing and must maintain 6' distancing between families. Individuals will need to provide their own chairs.

- Should temporary restroom facilities not be available, Spectators will be allowed to enter the complex to utilize restroom facilities only and must return to the perimeter at once. No lingering inside the complex will be allowed. If temporary restroom facilities are available, Spectators will not be permitted to enter the complex gates.
- Bridgeport Little League is currently working on details of the operation of a Concession Stand. The Concession Stand may be operable in a limited or modified plan. Details will be made available on site.
- The operation of a concession stand will be run in accordance with current orders and guidelines for restaurants and bars, found at governor.wv.gov.
- Upon entering the interior of the complex, all players and spectators must follow the directional signs to navigate. The restrooms must be entered via the west side of the building close to the Field 1 – Thrasher Engineering field. All must exit via the east side doors nearest Field 3. A physical barricade will direct people to enter and exit the complex in a counterclockwise manner.
- The bleachers adjacent to each field will be off limits to all spectators. The bleachers will be marked for social distancing and will be utilized to social distance the players using the individual fields as temporary dug outs.
- Games will be scheduled to allow for a delay allowing players to promptly exit the facility before the next groups arrives. Cleaning procedures for dugouts and high touch areas will be in place between practices/games.
- All player bags will remain in the corridors away from dugouts, bleachers and common spaces used by players.

Cball (Field 5) Field at Recreation Complex:

- Parents will drop children off to coaches on fields and return to designated areas along the foul lines and outfields.
- Spectators will maintain 6' social distancing at all times.
- All bleachers will be used for distancing participants and will be off limits to spectators.
- All player bags will remain away from dugouts, bleachers and common spaces used by players.

City Park Fields

- Parents will drop children off to coaches on fields and return to designated areas along the foul lines and outfields.
- Spectators will maintain 6' social distancing at all times.
- All bleachers will be used for distancing participants and will be off limits to spectators.
- All player bags will remain away from dugouts, bleachers and common spaces used by players.

- Details for operation of a Concession stand are forthcoming and the operation of the concession stand will be run in accordance with current orders and guidelines for restaurants and bars, found at governor.wv.gov.

Soccer Fields

- Teams will use these fields as warm up/on deck facilities for next game.
- Areas will be marked for respective fields (1 through 5)

PPE:

Though not required, all Coaches, Participants and Spectators are encouraged to wear PPE including face coverings.

Health Screenings:

All players, coaches and spectators should self-monitor pursuant to CDC guidelines. Any patron including spectators experiencing any COVID-19 symptoms should not visit City facilities. These include:

- Been in close contact with a confirmed case of COVID-19.
- Experiencing a cough, shortness of breath, or sore throat
- Had a fever in the last 48 hours
- Had new loss of taste or smell
- Had vomiting or diarrhea in the last 24 hours

No spitting, seeds of any type of gum will be allowed at any City facility

Cleaning:

- City staff will be taking extra precautions and increasing cleaning frequency of restroom facilities.
- Attention will be given to Common elements and Touch Points
- As supply is available, hand sanitizer stations will be maintained.
- All teams are required to clean up all trash and disinfect high touch surfaces upon completion of use.

Player Protection:

- Use of PPE is highly recommended.
- No handshakes or personal contact before or after games. Alternatives to handshakes or high fives should be established, such as tipping of caps or applauding the opposing team.

- Limit use of shared equipment. Players should have their own equipment including gloves, bats etc. Any shared equipment such as catchers gear should be properly disinfected after each use.

Covid-19 Outbreak

- Tournament players and their families should be instructed to contact League officials immediately should a participant or family member test positive for Covid-19.

High Risk Individuals

- Any patron included in a high-risk category for Covid 19 or who is uncomfortable with these measures is encouraged to stay home.
- Reminder that Fields 1 and 4 have live web-cams available for viewing on www.connect-bridgeport.com

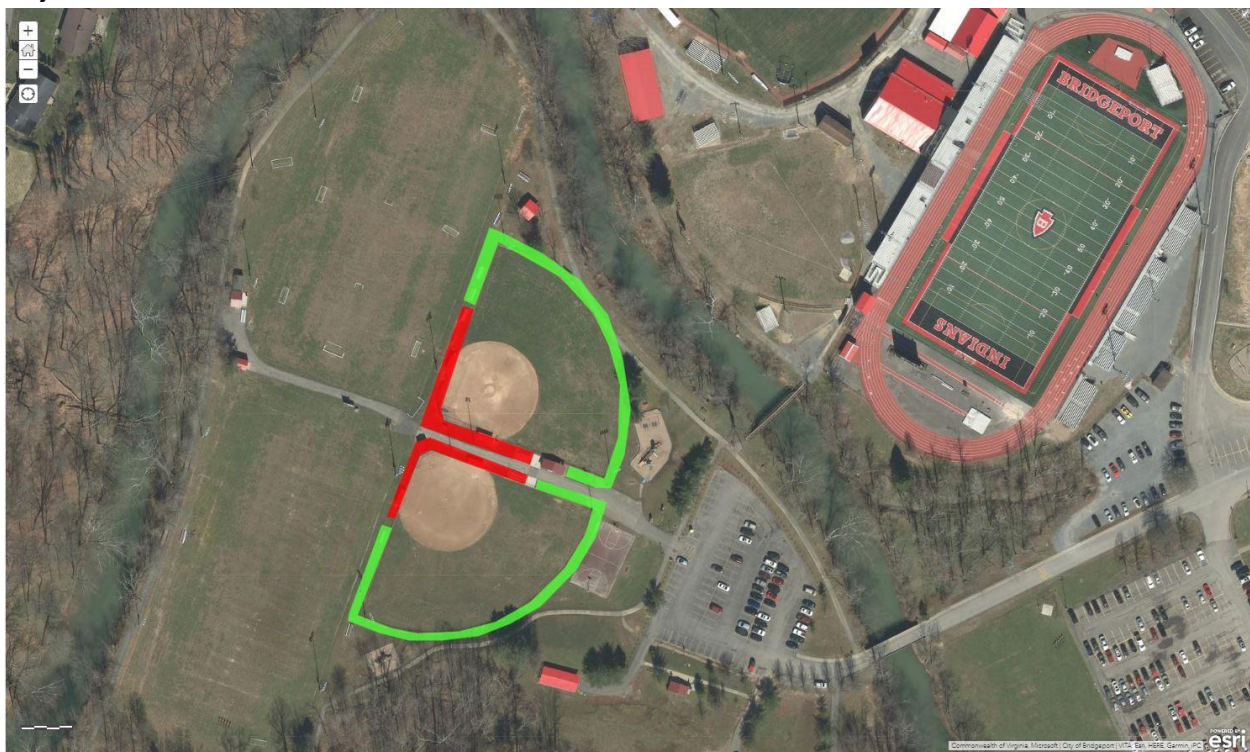
Additional Requirements for Tournaments:

- To ensure that we stay below the Maximum Crowd Size of 100 patrons per field, ensure that only 2 individuals per player be allowed on site. This would have to be communicated to and agreed upon by all incoming teams.
- All tournament staff should be clearly recognized by either a staff shirt, badge or other method to distinguish them.
- Understand that Concessions may not be available due to limiting crowd sizes in corridors and common areas. We are exploring other options including Food Trucks in parking areas.
- Press box will be off limits to all children and be limited to two individuals per desk only if scoreboards are being used. If only book being kept, limit of one person per desk. Other non-tournament staff are prohibited in press box.
- Each team will be responsible for cleaning permanent and temporary dugouts. Basic cleaning supplies will be provided on site. All trash must be cleaned prior to team exiting field. Benches and bleachers utilized must be wiped down.
- No coaches or players allowed on the playing surface while City staff is preparing fields.

Mapped Areas of Use:

- Please use these illustrations to instruction spectators to appropriate areas
 - Red areas are for players and coaches only
 - Green areas are for spectator seating with proper social distancing

City Park



C-Ball and T-Ball Fields



Recreation Complex:

- Yellow arrows indicate pedestrian traffic flow patterns
- All patrons entering the complex for use or for restrooms must follow the pattern.



